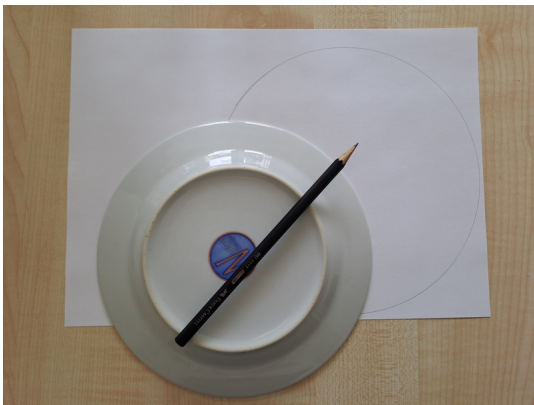


Bastelanleitung Spinne im Netz

Material:



- dünnes, weißes Papier
- Teller
- Schere
- Bleistift
- schwarzer Stift



Schritt 1:

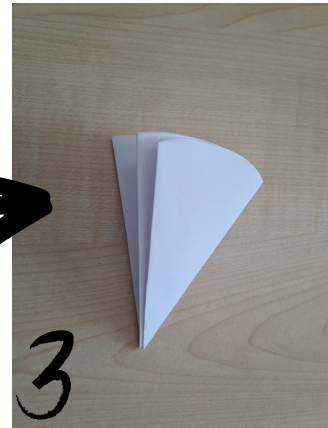
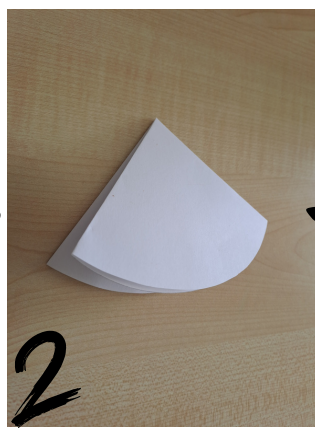
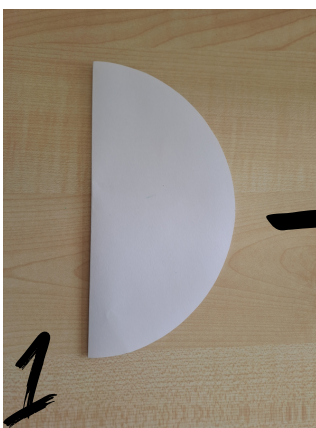
mit dem Bleistift einen Kreis auf das Blatt malen



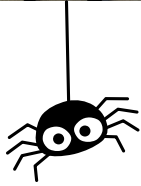
Schritt 2:

Kreis ausschneiden

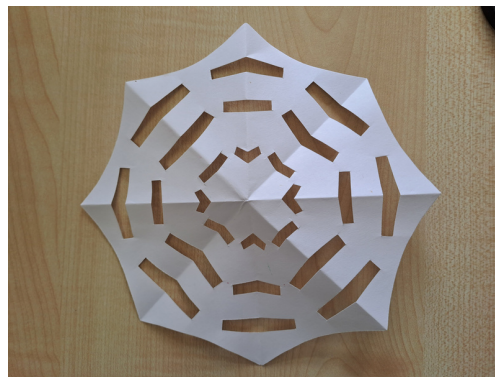
Schritt 3-5: in der Mitte falten



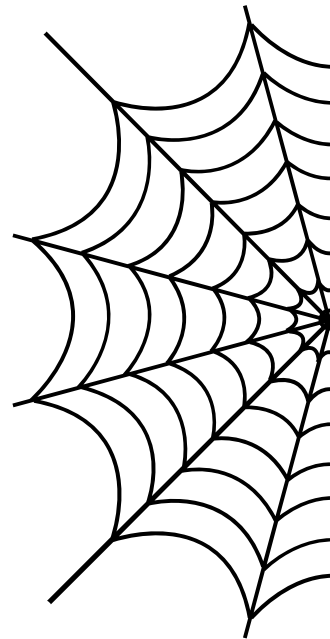
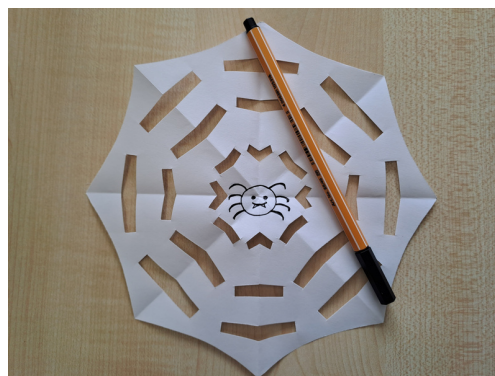
Schritt 6-7: schneiden wie abgebildet



Schritt 8: aufklappen



Schritt 9: Spinne ins Netz malen



Fertig!